



V10 2-WAY ACTIVE LINE SOURCE



www.qanon-audio.com



SAFETY INSTRUCTIONS

1. Read this document

2. Pay attention to all safety instructions and hazards and obligatory warnings

3. Do not use equipment or accessories that are not approved by QANON AUDIO.

4. Attention to Sound Level

Do not approach the speaker when operating, and consider wearing earplugs.

Speaker system can produce very high sound pressure level (SPL), which can be instantaneous.

It results in permanent hearing impairment to performers, producers and audiences.

Listening can take place for a long time:

8 hours 90 decibels (A-weighted), 30 minutes 110 decibels (A-weighted), less than 4 minutes 130 decibels (A-weighted).

5. Read the manual before operating the product.

Use speaker system components described in user manual and follow instructions

6. Read the rigging manual before installing the product.

Use the hanging accessories described in the installation manual and follow the relevant procedures.

7. Before repairing the product, please read the "Maintenance" section of this document.

8. Do not expose products to extreme conditions

Do not expose the product to rain or waves.

Do not expose the product to humidity (fog, steam, humidity, cooling, etc.) or overheating (direct sunlight, radiator...) For a long time

9. Do not store products on unstable carts, brackets, tripods, brackets or tables.

10. Maintain this document as an integral part of the product

Put this document in a safe place.

Record any services of the product in the maintenance section of this document

Do not resell products without this update document

Thank you for purchasing QANON AUDIO #V10. The container shall contain - 1 #V10 enclosure. Each QANON AUDIO #product has been tested and inspected before it leaves the factory and should arrive intact. Carefully open the container and check for any apparent damage. If so, inform the transport company or distributor immediately. Only the consignee can claim against the carrier for damage in transit. Cartons and packing materials must be kept for inspection by carriers. Read this document carefully to familiarize yourself with the product and identify external documents that contain basic information on correct and safe installation and operation of the product. All the documents described below can be accessed free of charge on the QANON AUDIO < website (www.qanon-audio.com).

As part of the continuous development of technology and standards, QANON AUDIO reserves the following rights:

Change product specifications and document contents without prior notice. Please visit the QANON AUDIO website regularly to download the latest updates of documents and software.



V10 2-WAY ACTIVE LINE SOURCE



- Maximum SPL 141dB
- 2 x 10" Neodymium LF driver unit
- 2 x 3" Neodymium HF driver unit
- 100° horizontal
- Adjust angle 0°, 1°, 2°, 3°, 4°, 5°, 6°
- Down Fill V15 Line Source
- Down Fill V12 Line Source
- V8 Line Source(Down Fill)
- V18 Extended Woofer (Fly Sub)
- VS28 / VS221 Subwoofer

The V10 enclosure is a linear array loudspeaker with adjustable angle.

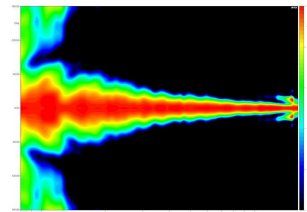
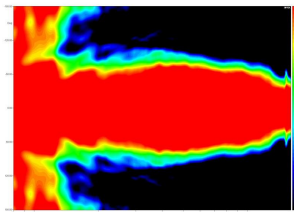
The V10 has two 10-inch speakers mounted in a bass reflector and a 3-inch diaphragm compression driver with two waveguides.

The V10 cabinet is based on two passive designs, one low frequency band and one high frequency band. The rated impedance of each band is 8 ohms.

The V10 enclosure is made of Baltic birch plywood to ensure maximum acoustic and mechanical integrity.

The four-point suspension system is integrated in the box, and the V10 enclosure works in the rated frequency range of 50Hz-20kHz. The frequency response system can be extended to 40Hz or 35Hz, and special V18 extended bass, VS28 or VS221 subwoofer are added respectively. V10 produces a 100 degree symmetrical horizontal coverage. The suspension system allows vertical assembly of different box angles up to 6 degrees, forming a line array with variable parameters to ensure a perfect acoustic effect.

The V10 system is driven by C15 or VAD18/VDA12 power amplifier controller to ensure the linearization of passive system, the protection of loudspeaker and the optimization of loudspeaker system in different operations. The acoustics of the system will depend on the preset and selected physical configuration.





V10 Technical Specification

V10 Technical Specification

Type	2-way active line source enclosure
Frequency Response(Preset)	50Hz-20kHz(-10dB)
Horizontal	100°(-6dB)
Angle Increments	0° 1° 2° 3° 4° 5° 6°
Drivers	LF:2×10" Neodymium HF:2×3" Neodymium
Handling Power (AES)	LF:500W HF:220W
Maximum Peak SPL	141dB/1m
Nominal Impedance	LF:8Ω / HF:8Ω
Connections	2 x NL4 SpeakOn
Pin Connections	NL4=LF: +1-1 HF: +2-2
Height Front	310mm
Height Back	263mm
Width	700mm
Depth	450mm
Weight	33kg / 72.7lb

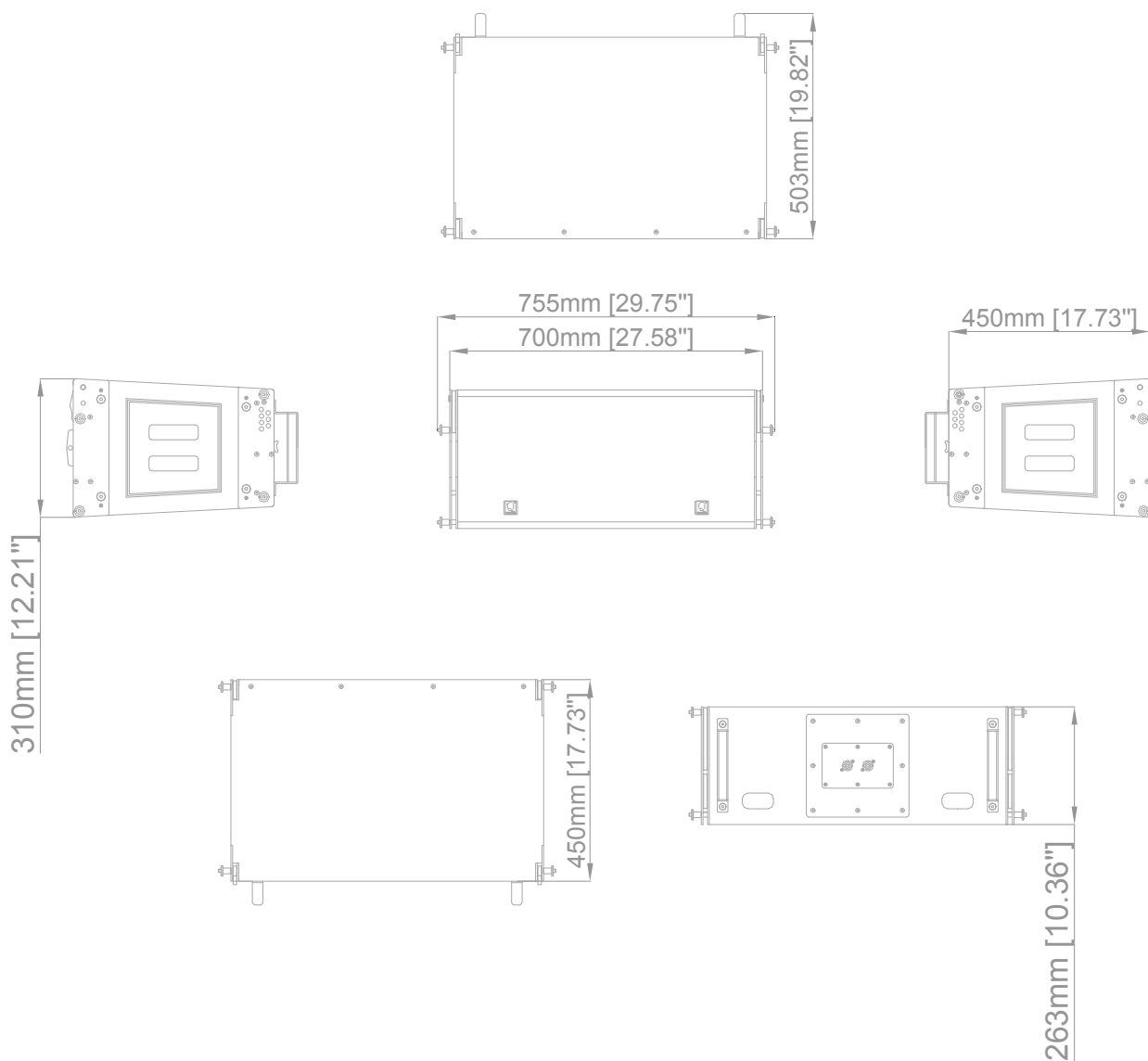
Rigging and Handling

Handle	6 ergonomic handles
Antiskid	N/C
Fastener	4 side fastener

Physical Data

Material	Baltic Birch Plywood
Finish	Dark grey
Front	Polyester powder-coated steel grill
Rigging	Steel
Protection rating	IP45

Dimensions CAD





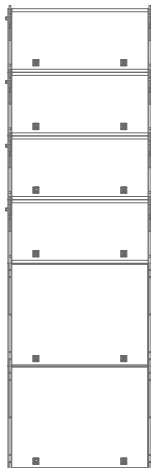
Application

The V10 line array system is designed and applied with at least 3 units/group, providing fast and simple ground stacking applications. The V10 line array system can be built to meet the needs of vertical coverage angle in the form of straight lines or curves, which can be used for large-scale site activities with extremely high level requirements. V10 uses multiple configurations of up to 16 speakers per group, and 4-point hoisting method is also adopted for hanging parts. 4mm steel (synthetic width is 18 mm) and 8mm steel connecting rod are used. When 16 speakers are hoisted, the safety factor of hanging parts is 6:1. V10 can be integrated with V15/V12/V18/V8 speaker hanging system. When V15 or V12 is used, the converter can be used with V10/V8 as Down Fill, and V18 medium-low frequency speaker can be integrated with hanging or ground stacking to enhance the low-frequency response of the system. VS28/VS221 speaker can be used as ultra-low frequency, providing fast and simple lifting or ground stacking integration.

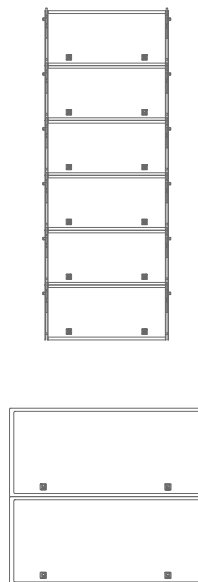
V Series Line Array V15/V12/V10/V8 (Incremental Consistency)

Adjustable degrees: 0°, 1°, 2°, 3°, 4°, 5°, 6°

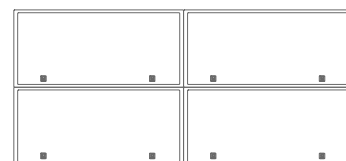
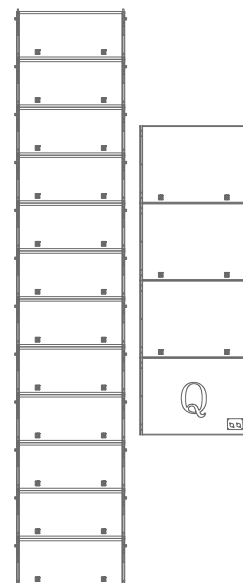
V10+V18



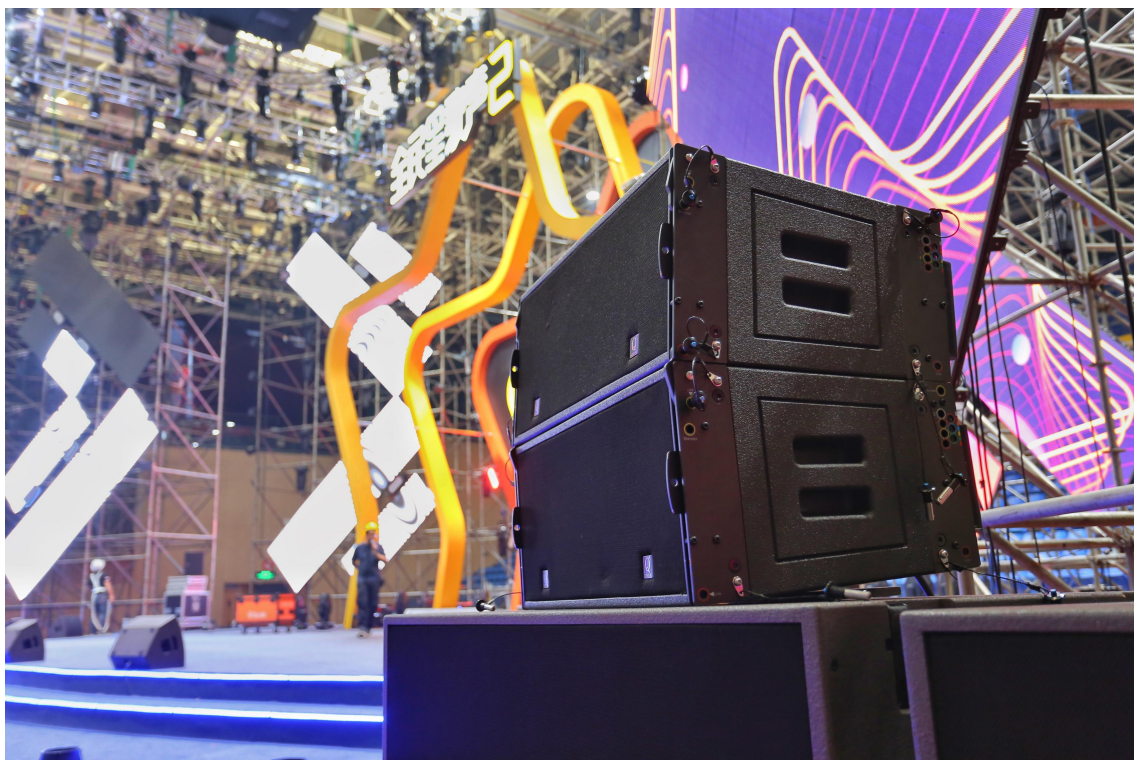
V10 + Sub



V10+V18+Sub



APPLICATIONS AND CASE



APPLICATIONS AND CASE



TRANSPORTATION ACCESSORIES

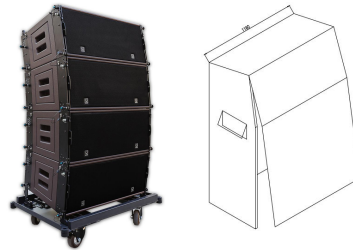
V10-Touring case:

removable front case on wheels (two V10)



V10-Chariot: chariot for up to four V10

V10-Chariot Cover: Protective cover for four V10 on V10-Chariot



Rigging Frame Accessories

V10 / V8-Hoist connector chain 2t

V10 / V8-U Shackle (3' 5/8) 4t



Rigging Frame with Extender Beam for V10 / V8 and V18 enclosures

V10 / V8 / V18-Bump

V10 / V8 / V18-Bar with Extender Beam



Rigging Frame with Down Fill for V15 and V12 enclosures

V10 / V8-DownFill V15

V10 / V8-DownFill V12



Rigging Frame Touring Case with

V10 / V8 / V18 Bump x2



Speaker Cable

V10 / V8 4Pin NL4 4 x 4 mm² (50cm)

V10 / V8 4Pin NL4 4 x 4 mm² (15m)





Maximum number of enclosures per Amp / Impedance load

Enclosure	Max enclosure in parallel	Max enclosure per controller
V15	2	2
V12	3	3
V10	3	6
V8	3	6
V18	2	8
V25	1	4
VS28	1	4
VS221	1	4

Enclosure	1	2	3
V15	LF 8 Ω / MF 8 Ω / HF 8 Ω	LF 4 Ω / MF 4 Ω / HF 4 Ω	None
V12	LF 8 Ω / MF 8 Ω / HF 8 Ω	LF 4 Ω / MF 4 Ω / HF 4 Ω	LF 2.7 Ω / MF 2.7 Ω / HF 2.7 Ω
V10	LF 8 Ω / HF 8 Ω	LF 4 Ω / HF 4 Ω	LF 2.7 Ω / HF 2.7 Ω
V8	LF 8 Ω / HF 16 Ω	LF 4 Ω / HF 8 Ω	LF 2.7 Ω / HF 5.3 Ω
V18	LF 8 Ω	LF 4 Ω	None
V25	LF 4 Ω	None	None
VS28	LF 4 Ω	None	None
VS221	LF 4 Ω	None	None

PA-COM 8-Pin 8*4²	V15	V12
Transducer connectors	A / B = LF +1-1 C / D = MF +2-2 E / F = MF +3-3 G / H = HF +4-4	A / B = LF +1-1 C / D = MF +2-2 E / F = MF +3-3 G / H = HF +4-4
NL4 4-Pin 4*4²	V10	V8
Transducer connectors	LF = +1-1 HF = +2-2	LF = +1-1 HF = +2-2
NL4 4-Pin 2*4²	V18	V25
Transducer connectors	LF = +1-1	LF = +1-1
NL4 4-Pin 2*4²	VS28	VS221
Transducer connectors	LF = +1-1	LF = +1-1

VDA Rack



VDA-Rack



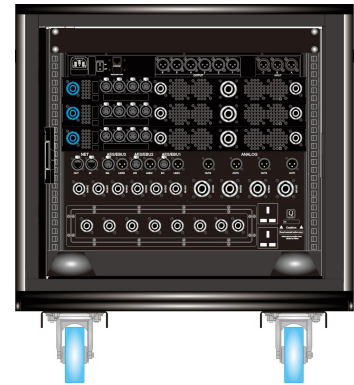
VDA-Rack2



VDA18

C15 AMPLIFIED CONTROLLER with Processor

C15 Rack



ASSOCIATED ENCLOSURES

V15/V12



V10/V8



VS221/VS28/V25

